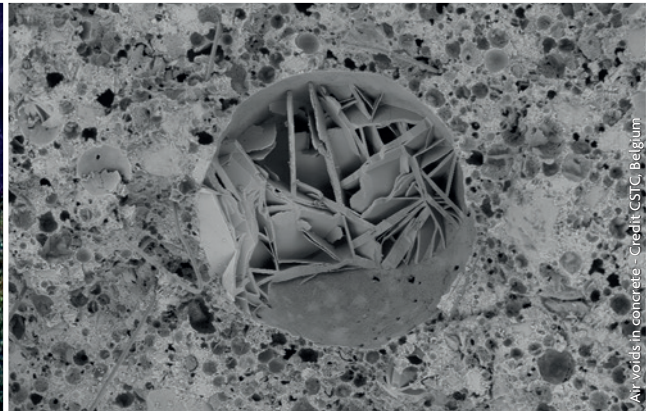


Petrographical analysis of Euville stone - Credit BBG, Belgium



Air voids in concrete - Credit CSTC, Belgium



Visit to the construction site as part of the DTU-COST-RILEM Doctoral Course, Lyngby, Denmark, 15-19 August 2016 - Credit Marija Nedeljkovic, The Netherlands



International Union of Laboratories and Experts
in Construction Materials, Systems and Structures

Origin & Mission

The International Union of Laboratories and Experts in Construction Materials, Systems and Structures (RILEM, from the name in French) was founded in June 1947 in Paris, France, with the aim to promote scientific cooperation in the area of construction materials and structures worldwide.

This mission is achieved through collaboration of leading experts in construction practice and science including academics, researchers, industrialists, testing laboratories and authorities.

The three main goals of RILEM are:

- to promote sustainable and safe construction, and improved performance and cost benefits for society.
- to stimulate new directions of research and its applications, promoting excellence in construction.
- to favour and promote cooperation at international scale by general access to advanced knowledge.

Committee Work and Reports

In 1956, the first RILEM Technical Committee (TC) was created, on the topic of 'Winter Concreting'. Since then almost 300 Technical Committees have been active, producing State-of-the-Art reports and/or Test Recommendations, and organizing RILEM Workshops and Symposia. RILEM TCs have a limited life time to complete their work, typically five years.

Six clusters coordinate the activities of RILEM TCs:

- A. Material Processing and Characterization
- B. Transport and Deterioration Mechanisms
- C. Structural Performance and Design
- D. Service Life and Environmental Impact Assessment
- E. Masonry, Timber and Cultural Heritage
- F. Bituminous Materials and Polymers

Over 200 **RILEM Technical Recommendations** have been produced by RILEM Technical Committees. Many of these recommendations have been adopted in research and practice, and are used by international standardisation bodies, as a basis for their work.

The **State-of-the-Art Reports** constitute a critical appraisal of current knowledge on a specific research subject. They often identify gaps in knowledge, thereby contributing to the development of strategies and scenarios for future research.

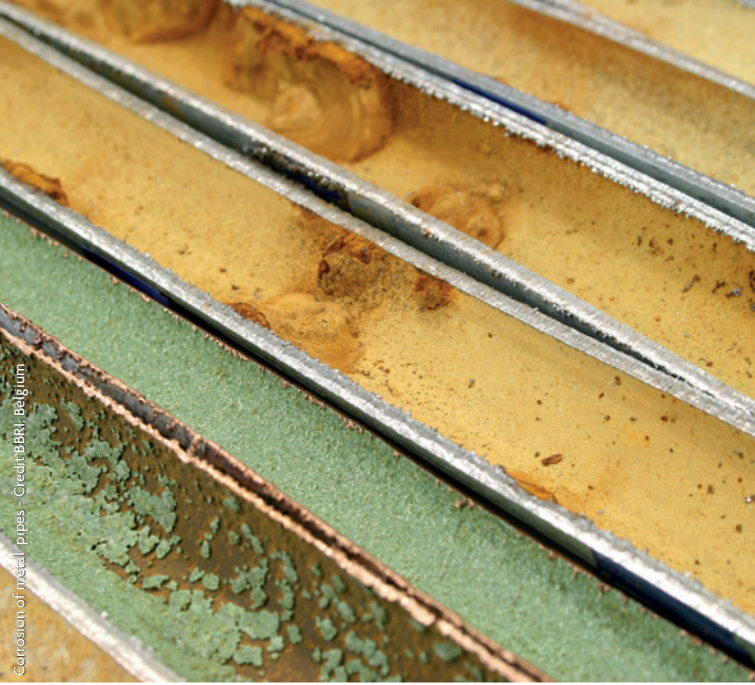
More than 1200 experts are involved in RILEM's work.
700 members are active in Technical Committees.

Conferences, Workshops and PhD Courses

RILEM has been organising symposia and workshops since its foundation. Through its subsidiary company RILEM Publications Sarl, RILEM has published more than 100 proceedings since 1997. A quick glance at www.rilem.net shows the diversity, the importance, and the international scope of the topics.

To broaden the education of both PhD students and the professional community, RILEM sponsors interesting and informative PhD courses and seminars on subjects of relevance to researchers working in specific areas.





Corrosion of metal pipes - Credit: BBR, Belgium



RILEM Geopolymer workshop, Faculty of Civil Engineering, TU Delft, The Netherlands, 13 April 2016
Credit: Jinyi Chen, The Netherlands

Annual Week

Each year, RILEM organizes two main events, one in Spring which usually takes place in Europe, and the RILEM Annual Week in late August or early September outside of Europe. A major international conference is combined with numerous meetings of RILEM Technical Committees and Standing Committees. During the 'Technical Day', the technical work of RILEM is presented to a wider audience.

RILEM Journals

Materials and Structures, the flagship publication of RILEM, provides a unique international and interdisciplinary forum for new research findings on the performance of construction materials. The journal, published by Springer, is dedicated to the publication of high quality papers examining the fundamental properties of building materials, their characterization and processing techniques, modeling, standardization of test methods, and the application of research results in building and civil engineering.

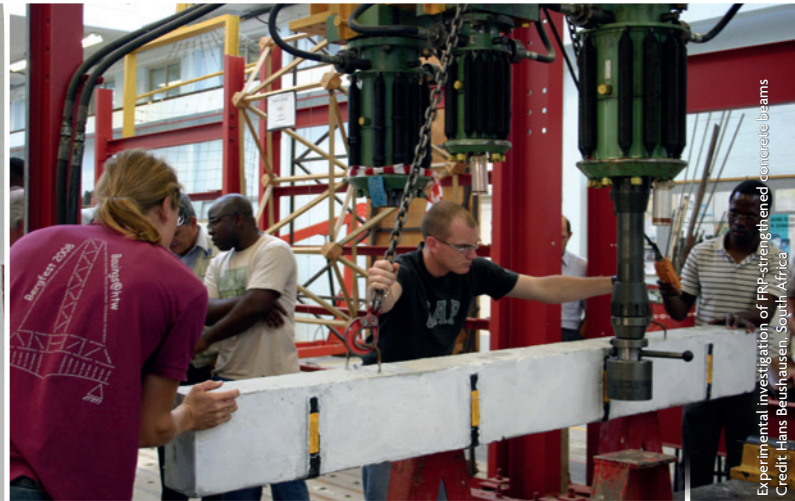
RILEM Technical Letters is an open access journal devoted to disseminating key breakthroughs and current contributions in the field of construction materials science. The journal focuses on the publication of short reports of major innovative research or strategic research needs in the field of construction materials and structures. By providing a fast publishing process, RILEM Technical Letters constitutes a new landmark among the publications devoted to construction materials science. Publication costs are sponsored by RILEM for RILEM members.

Awards

Besides nominating **Fellows** and **Honorary Members**, RILEM awards the prestigious **Robert L'Hermite Medal**, named after its founder. The medal is awarded to a researcher, under the age of 40 years, who has made an exceptional scientific contribution to the field of construction materials and structures. Since 2016, up to two **Gustavo Colonnelli Medals**, named after the first RILEM President and co-founder of the association, are awarded to researchers of less than 35 years.



RILEM extends its networking beyond the members, through the participation of experts in RILEM organised symposia and events, or through the articles published in our journals.



Membership

RILEM is composed of corporate members and individual members, including scientists and engineers, research and testing laboratories and companies. For more information on membership, please contact us.

RILEM General Secretariat

14/20 boulevard Newton
77420 Champs-sur-Marne
France
assistant@rilem.org

www.rilem.net

